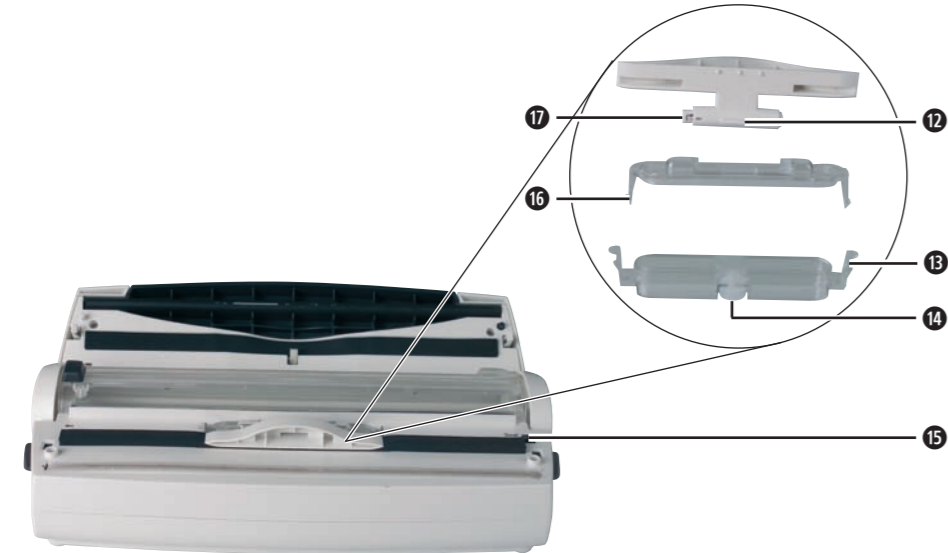
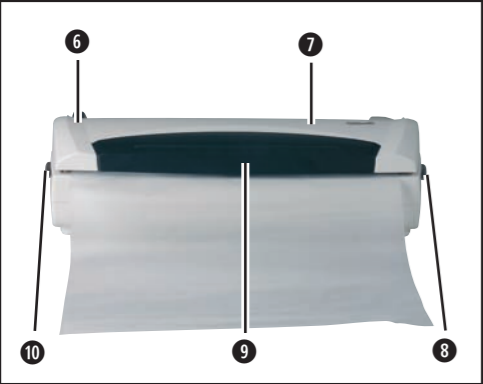
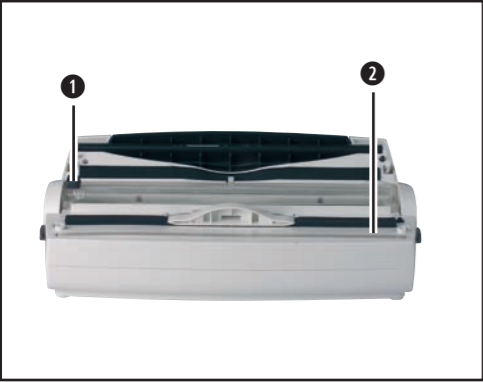


## ■ VACUUM SEALER



**VACUUM SEALER**  
Operating instructions



<b>INDEX</b>	<b>PAGE</b>
Intended use	2
Important safety instructions	2
Items supplied	2
Technical data	3
Description of the appliance	3
Commissioning	3
Utilisation	3
Cleaning	5
Maintenance	6
Disposal	6
Importer	6
Warranty and Service	7

Read these operating instructions carefully before using the appliance for the first time and preserve this booklet for future reference. Pass this booklet on to whoever might acquire the appliance at a future date.

# VACUUM SEALER

## KH 1605

---

### Intended use

---

This plastic film sealer is intended for the occasional vacuum-packing of food in typical household quantities and only for private household use. This product is not intended for commercial or industrial applications or for continuous operation.

### Important safety instructions

---

#### **⚠ To avoid potentially fatal electric shocks:**

- Protect the appliance against moisture. Only use the device in dry rooms, not outdoors. Ensure that fluids can never permeate into the appliance, whether during cleaning or from the leaking of fluids during the sealing process. Also, do not use the appliance if you have wet hands.
- Ensure that the power plug is at all times freely accessible, so that in a case of emergency it can be quickly removed from the power source.
- Ensure that when the appliance is in use the power cable cannot become jammed or damaged in any way. Place it such that no one can trip or stumble over it.
- Should the power cable or the power plug become damaged, in order to minimise potential risks arrange for Customer Services to replace them before continuing to use the appliance.
- Should the appliance become damaged, immediately remove the power plug. Then arrange for the appliance to be checked by Customer Services.

- After use or during absences, ALWAYS remove the plug from the power socket. Never leave the appliance unsupervised when it is connected to mains power. For as long as the plug is inserted in the wall socket the appliance itself is under electrical power.

#### **⚠ To avoid the risk of fire:**

- Use only the special plastic films that are suitable for a plastic film sealer.
- Allow the appliance to cool down after every sealing process before continuing to use it.
- NEVER position the appliance below inflammable objects, especially not below curtains or drapes.

#### **⚠ To avoid the risks of accidents and personal injuries:**

- The sealing wire becomes hot during operation. NEVER touch it directly after a sealing process.
- This appliance is not intended for use by individuals (including children) with restricted physical, physiological or intellectual abilities or deficiencies in experience and/or knowledge unless they are supervised by a person responsible for their safety or receive from this person instruction in how the appliance is to be used. Children should be supervised to ensure that they do not play with the appliance.

### Items supplied

---

- 1 Plastic Film Sealer
- 1 Tube film made of PE-HD (Polyethylene of high density)
- 1 Operating manual

- ⇒ Check to ensure that the appliance is undamaged and that all parts and remnants of the packaging are removed from it.

## Technical data

Mains voltage: 230-240 V ~ 50Hz

Power consumption : 150 W

Protection class: II / □

Recommended operating times:

Vacuuming: 15 Seconds

Sealing: 5 Seconds

After vacuuming and sealing allow a break of 80 seconds before continuing to seal further bags.

## Description of the appliance

- ❶ Cutter
- ❷ Protection strip over the sealing wire
- ❸ Cover - film compartment
- ❹ Extractor supports
- ❺ Sealing wire
- ❻ Control lamp
- ❼ Appliance cover
- ❽ Unlocking device right
- ❾ Button
- ❿ Unlocking device left
- ⓫ Bag around the exhaust supports
- ⓬ Lug under the exhaust supports
- ⓭ Clip on the filter box
- ⓮ Seal on the filter box
- ⓯ Selector switch
- ⓰ Clip on the filter cover
- ⓱ Lock for exhaust supports

## Commissioning

- ⇒ Place the appliance on a non-slip and stable surface.
- ⇒ Insert the power plug into a wall power socket.

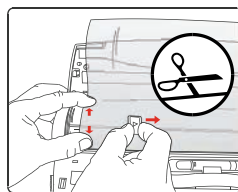
## Inserting the film

- ⇒ Open up the cover to the film compartment ❸ and insert a roll of tube film.
- ⇒ Pull a piece of the film out and close the cover of the film compartment ❸.

## Utilisation

### Cutting the film

- ⇒ Pull out as much film as is required for the moment.
- ⇒ Slide the cutter ❶ all the way to the left.
- ⇒ Lay the pulled out film smoothly over the cover to the film compartment ❸ and pull the film to the rear.
- ⇒ Fixate the film above and below the cutter ❶ with your fingers.



### **i**Note:

Press simultaneously on the two unlocking devices left ❿ and right ❽ and open up the appliance cover ❼. In this way you can better fixate the film when cutting.

- ⇒ Slide the cutter ① over the film and all the way to the other side.

### **ⓘ Note:**

The film will only be cut when you slide the cutter ① from left to right!

## **Sealing the film**

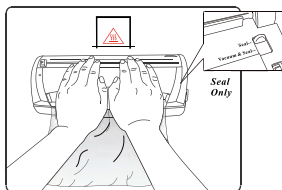
### **⚠ Attention:**

For sealing use only films made of PE-HD (Polyethylene of high density). Otherwise, the sealing seam will not be tight and the appliance could be damaged. You can recognise films of this type by the inscription "PE-HD" on the packaging.

### **⚠ Attention:**

Do not heat the supplied film, for example in a water-bath or similar. It is construed for temperatures of a maximum of 60 °C.

- ⇒ Press simultaneously on the two unlocking devices left ⑩ and right ⑧ and open up the appliance cover ⑦.
- ⇒ Lay the end of the film tube to be sealed over the sealing wire ⑤.
- ⇒ Place the selector switch ⑮ into the position "Seal".
- ⇒ Then close the appliance cover ⑦. Ensure that the film tube does not slip off of the sealing wire ⑤.
- ⇒ Press down the appliance cover ⑦ on the outer sides until it audibly clicks in at left and right.



- ⇒ Press and hold the broad button ⑨ with both hands until the control lamp ⑥ lights up. Hold the button pressed down until the control lamp goes out.

### **ⓘ Note:**

To achieve the best results, press the button ⑨ down continuously, applying an even pressure and using both hands.

### **⚠ Warning:**

If the control lamp ⑥ does not go out after a maximum of 10 seconds, the appliance is defective! Immediately remove the plug from the wall socket. Do not attempt to repair the appliance yourself. In this case, contact Customer Services.

- ⇒ Re-open the appliance cover ⑦, as described above, and remove the film. This is now sealed at one end to a bag. This bag can now be filled and the other end sealed by the same procedure.

### **⚠ Warning:**

Fill the bags in such a way that, under no circumstances, food remnants or fluids can run out of the bag when sealing it and permeate into the appliance.

## Vacuuming films

When sealing, you can at the same time extract the air from the bag (vacuuming):

### **Warning:**

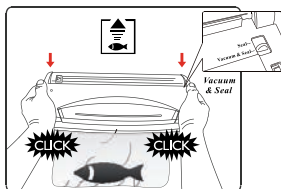
Do NOT vacuum bags in which there are liquids. They will permeate into the appliance and damage it.

- ⇒ Place the selector switch **15** to "Vacuum & Seal".
- ⇒ Then place the open end of the bag around the extraction supports **4**. For this you can lift them lightly.

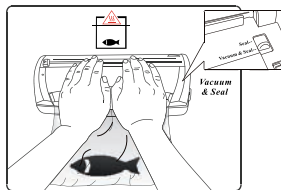
### **Note:**

The bag opening must sit smoothly on the extraction supports **4** and on the sealing wire **5**. If it does not, the extraction supports **4** can block and fail to function.

- ⇒ Close the appliance cover **7** and press it down on both sides, until a "click" is heard and the appliance cover **7** locks in at the sides. Air is now sucked from the bag.



- ⇒ As soon as the air has been sucked from the bag, press and hold the broad button **9** with both hands, as already described, and seal the bag.



## Storing the appliance

- ⇒ Do not wrap the power cable around the appliance, use the guides provided on the bottom of the appliance.
- ⇒ Store the appliance where it will be dry and free from dust and particles, so that nothing can lodge in the suction device.

## Cleaning

### **Attention!**

First remove the power plug from the wall socket and allow the appliance to cool down completely before cleaning it or placing it into storage. NEVER submerge the appliance in fluids of any kind. Do not permit liquids to permeate into the appliance. You could receive a potentially fatal electric shock.

## Dismantling and cleaning the filter

Should food remnants unintentionally be sucked in when vacuuming, a filter protects the appliance from damages. Clean the filter as soon as contamination is visible:

- ⇒ Press left and right on the clips **13** to the filter box and remove this completely in an upwards direction.
- ⇒ Press left and right on the clips **16** of the filter cover and remove this from the filter box.
- ⇒ Slide the lock **17** on the exhaust supports to the right and remove this.
- ⇒ Clean all parts in lukewarm washing-up water and then allow them to dry well.

## Reassembling the filter

- ⇒ Insert the lower part of the filter box with the white seal **14** to the front.
- ⇒ Place the exhaust supports onto the filter cover such that the lugs **12** grasp into the depression on the filter cover. For this, slide the lock **17** on the exhaust supports to the right and press the exhaust supports downwards. Check to ensure that the exhaust supports **4** are now positioned in the appliance as illustrated under **11**.
- ⇒ Place the filter cover back on the filter box until the clips **16** of the filter cover snap back in.

## Cleaning the appliance

- ⇒ Clean the appliance with a dry or lightly moistened cloth only. Do not use abrasives or detergents, these could damage the plastic surfaces.
- ⇒ Do not remove stubborn glue remnants from the sealing wire **5** with hard or sharp objects, at the very most carefully use a fingernail. Otherwise the sealing wire and the isolation below it could be damaged.

## Maintenance

### **Warning:**

NEVER open the housing! There is potentially fatal high voltage in the appliance. Arrange for the appliance to be repaired by specialists only.

The appliance is maintenance-free. No form of maintenance, either on or in the appliance, is intended for execution by the user. In the event of malfunction or apparent damage, make contact with Customer Services.

## Disposal



**Do not dispose of the appliance in your normal domestic waste.**

This appliance is subject to the European Guidelines 2002/96/EG.

Dispose of the appliance through an approved disposal centre or at your community waste facility.

Observe the currently applicable regulations.

In case of doubt, please contact your waste disposal centre.



Dispose of all packaging materials in an environmentally friendly manner.

## Importer

KOMPERNASS GMBH  
BURGSTRASSE 21  
D-44867 BOCHUM

[www.kompernass.com](http://www.kompernass.com)

## Warranty and Service

---

This product comes with a 3-year warranty as of the date of purchase. This appliance has been manufactured with care and meticulously examined before delivery. Please retain your receipt as proof of purchase. In the case of a warranty claim, please make contact by telephone with our service department. Only in this way can a post-free despatch for your goods be assured.

The warranty covers only claims for material and manufacturing defects, not for wearing parts or for damage to fragile components, e.g. buttons or batteries. The appliance is intended solely for private domestic use, not for commercial applications.

If this product has been subjected to improper or inappropriate handling, abuse, or modifications not carried out by one of our authorised sales and service outlets, the warranty will be considered void. Your statutory rights are not restricted in any way by this warranty.

### **DES Ltd**

Units 14-15  
Bilston Industrial Estate  
Oxford Street  
Bilston  
WV14 7EG  
Tel.: 0870/787-6177  
Fax: 0870/787-6168  
e-mail: support.uk@kompernass.com

### **Irish Connection**

Harbour view  
Howth  
Co. Dublin  
Tel: 00353 (0) 87 99 62 077  
Fax: 00353 18398056  
e-mail: support.ie@kompernass.com